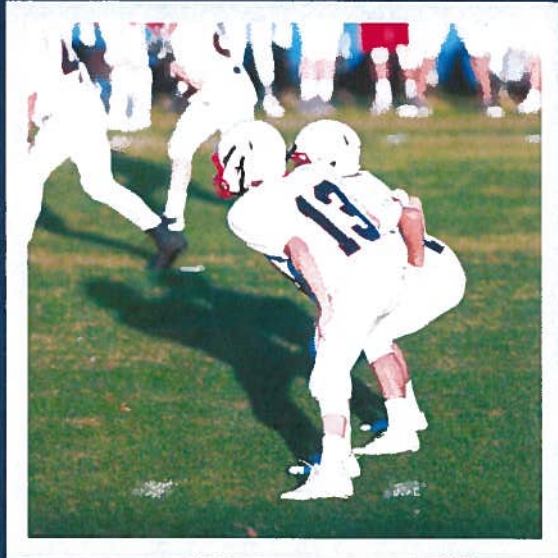




STAFFORD

Parks, Recreation & Community Facilities

AGES 7-14
AGE AS OF 9/1



YOUTH TACKLE FOOTBALL

REGISTRATION
DEADLINE 7/19/19

REGISTER IN PERSON WITH
YOUR PLAYER TO WEIGH IN
AT
COURTHOUSE COMMUNITY
CENTER
29 STAFFORD AVE
STAFFORD, VA 22554
M-F 8:00AM-4:30PM

Age: 7-14	Registration Deadline: 7/19		\$90 (\$100 non-res)
Division	Age	Max Weight	Line Weight*
Pee-Wee	7	Unl	>=110lbs.
	8	Unl	>=100 lbs.
	9	90 lbs.	
Junior	9	91 lbs. - Unl	>=150 lbs.
	10	Unl	>=140 lbs.
	11	Unl	>=130 lbs.
Senior	12	Unl	>=150 lbs.
	13	150 lbs.	
	14	140 lbs.	

* Line Weight is a term used to describe the league's line designation rule, which states that if a player is over the "line weight" limit, then said player can only play offensive or defensive line.

FEE: \$90 (\$100 NON-RES.)

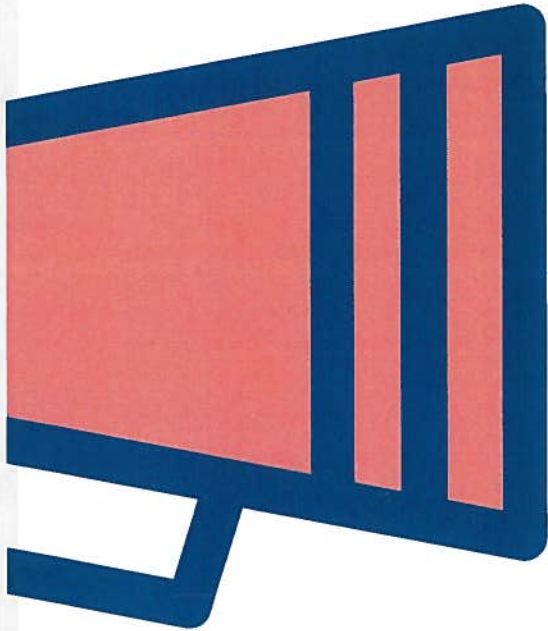
WWW.STAFFORDPARKS.COM
(540) 658-4572

These materials, and the activity described herein, are not sponsored or endorsed by the School Board of Stafford County or School Division.



STAFFORD

Parks, Recreation & Community Facilities



Ages 7-14

SIDELINE CHEER

CHEER FOR THE
STAFFORD TACKLE
FOOTBALL TEAMS!

Season is mid-Aug through Nov.
All games played in Stafford
County.

Registration Deadline: 8/5/19

Register in person at
Courthouse Community Center
29 Stafford Ave.
Stafford, VA 22554
M-F 8am-4:30pm

Fee: \$70 (\$80 non-res.) Includes
uniform & pom-poms.